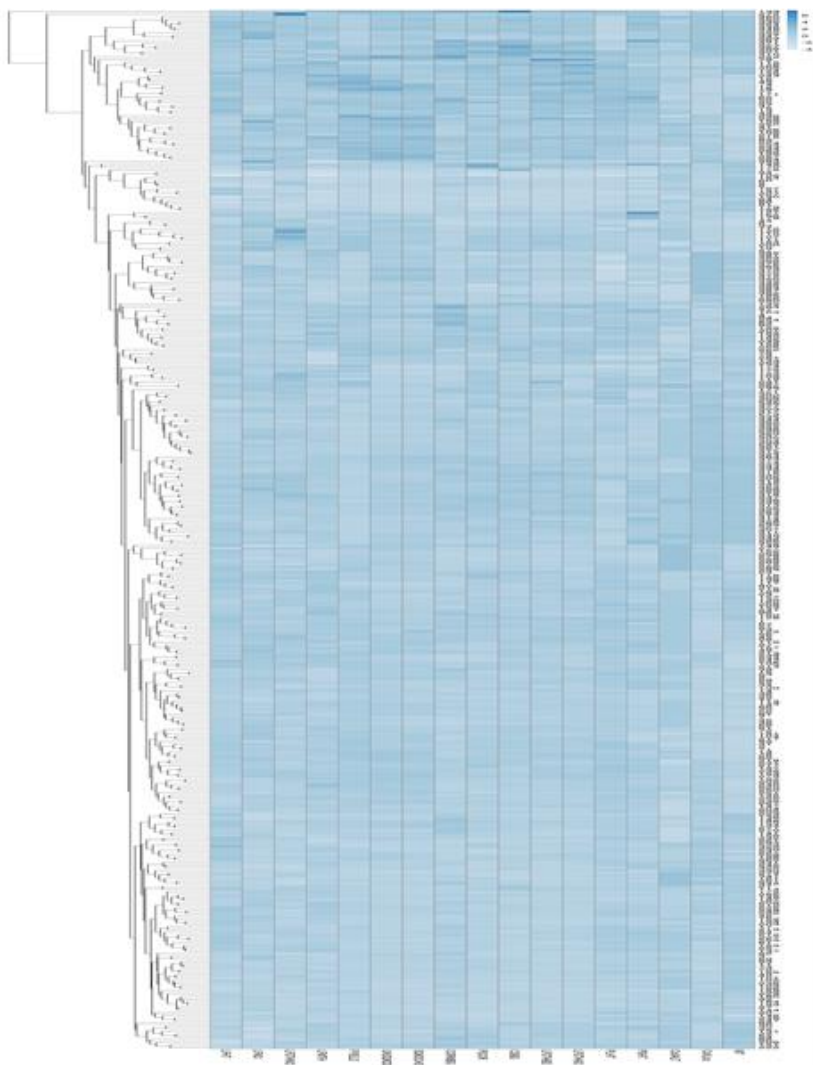


Multivariate analysis of morphological variation in enset (*Ensete ventricosum* (Welw.) Cheesman) reveals regional and clinal variation in germplasm from south and south western Ethiopia

Zerihun Yemataw*, Kassahun Tesfaye, Murray Grant, David J. Studholme and Alemayehu Chala



Supplementary Figure 1. Dendrogram showing the clustering pattern of 387 enset landraces computed using data collected on 15 quantitative traits.

Additional file 2. List of quantitative characters recorded in the study.

Quantitative Trait	Code	Description
Maturity time	MT	Number of years from transplanting up to harvesting.
Plant height (m)	PLHT	Measurement from ground level to the tip of the longest leaf at flowering.
Pseudostem height (m)	PSHT	Measurement from ground level to the start of the petioles.
Pseudostem circumference (m)	PSCIR	Measurement at the middle height of the ensset pseudostem.
Leaf number	LFNO	The number of 50% green and 50% unrolled leaves.
Leaf length (m)	LFL	Measurement of all functional leaves from the end of the petiole to the tip of the leaf and their mean was taken for analysis.
Leaf width (m)	LFWTH	Measurement of the widest part of all functional leaf blades just below flag leaf and their mean was taken for analysis.
Leaf sheath number	LFSTHNO	Count of all decorticable leaf sheaths obtained from each plant at harvest.
Leaf sheath weight before decortication (kg)	LFSTHBD	Weight of all leaf sheaths for each plant before decortication and measured before decortication
Leaf sheath weight after decortication (kg)	LFSTHAD	The weight of pulp for each plant after decortication and measured after decortication.
Central shoot weight before grating (kg)	CSBG	The weight of central shoot after the inflorescence removed is measured before grating.
Corm weight before grating (kg)	CORMBG	The weight of corm after fibrous roots removed and measured before grating.
Unfermented <i>kocho</i> yield per hectare per year	UFK	<i>Kocho</i> yield comprising the mixture of decorticated leaf sheath, grated central inflorescence bearing shoot, and corm immediately after processing.
Fermented unsqueezed <i>kocho</i> yield per hectare per year	UNSQKOCH	The unfermented <i>kocho</i> yield is left in the pit for some time, usually 30 days, for fermentation. The fermented <i>kocho</i> was measured for its weight before squeezing.
Fermented squeezed <i>kocho</i> yield per hectare per year	SQKOCHO	The fermented <i>kocho</i> yield was squeezed by applying human force to reduce its water as much as possible.