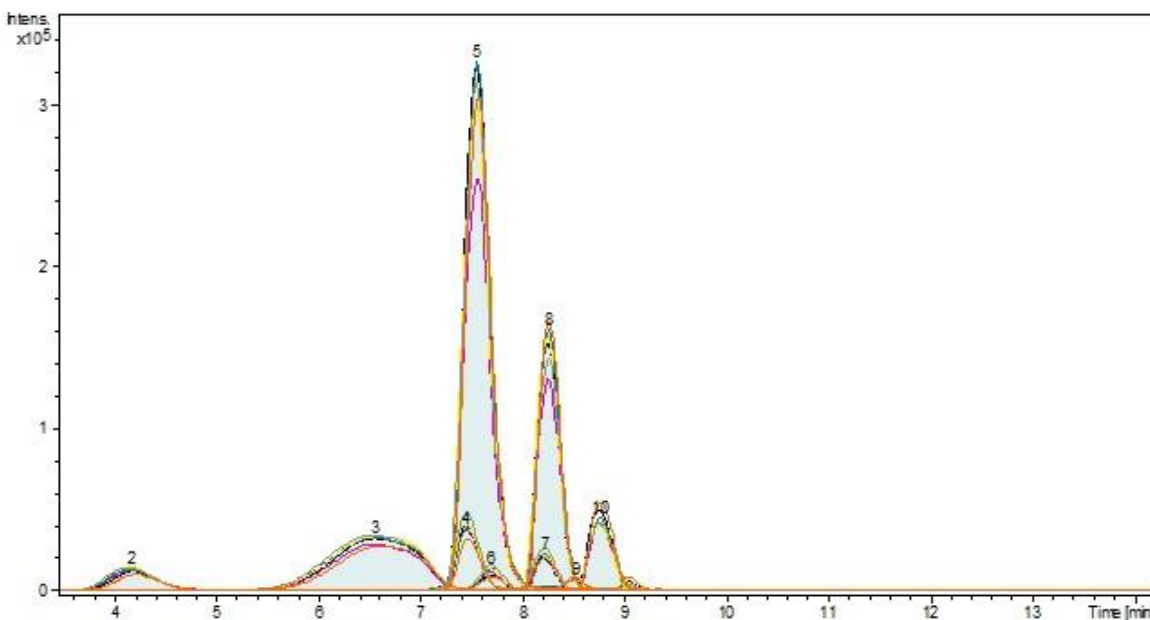


Supplementary Table 1. Agronomic variables (grape mass per plant, mean mass of bunches, berry mass, yield per hectare and bud fertility) and technological maturation (total soluble solids concentration (TSS - °Brix), titratable total acidity (TA), pH and potassium of cv. Tannat grapes grown in vineyards with plants grafted on the rootstocks '3309', 'SO4', 'Gravesac' and the clones 'Californian', '944', '717', '398', '794' in 2015, 2016 and 2017 harvests.

| Variables | Treatments | | | | | |
|--------------------------------------|-----------------|----------------------------|---------------------------------|---------------------|---------------------|---------------------|
| | '3309' '944' | 'SO4' Cal. [†] | 'Gravesac' Cal. [†] | 'Gravesac' '717' | 'Gravesac' '398' | 'Gravesac' '794' |
| Grape mass per plant (kg) | 2.520 ab | 2.656 ab | 2.542 ab | 2.801 ab | 2.390 b | 2.928 a |
| Bunch mass (g) | 198 ns | 215 | 189 | 208 | 186 | 215 |
| Berry mass | 1.58 ns | 1.62 | 1.59 | 1.62 | 1.66 | 1.62 |
| Yield [‡] (kg) | 10,481 ab | 10,625 ab | 10,168 ab | 11,207 ab | 9562 b | 11,713 a |
| Bud fertility | 1.13 ns | 1.17 | 1.23 ns | 1.09 | 1.11 | 1.14 |
| °Brix | 23.87 ns | 23.81 | 23.79 | 23.39 | 23.83 | 22.71 |
| Total acidity (meq.L ⁻¹) | 90.93 a | 82.62 b | 76.53 b | 89.15 ab | 85.77 ab | 87.68 ab |
| pH | 3.36 ns | 3.38 | 3.43 | 3.37 | 3.41 | 3.36 |
| Potassium (mg.L ⁻¹) | 1603 ns | 1277 | 1297 | 1550 | 1613 | 1602 |

Averages followed by the same letter, in the same line, did not differ among themselves according to the Duncan test at 5% probability ($p < 0.05$). ns, not significant. [†]Californian clone. [‡]Estimated productivity based on evaluated plants and planting density (4000 plants per hectare), expressed in kg.



Supplementary Fig 1. Chromatogram of anthocyanidin-extracted ions and acylated and non-acylated glucosides in the Tannat wines (%) of the 2017 harvest. Wines were produced in vineyards with plants grafted on the rootstocks: '3309', 'SO4', and 'Gravesac' and the Tannat clones 'Californian', '944', '717', '398', and '794'. **2:** delphinidin-3-O-glucoside (m/z 465,1028; RT: 4,26 min); **3:** petunidin-3-O-glucoside (m/z 479,1177; RT: 6,82 min); **4:** peonidin-3-O-monoglycoside (m/z 463,1229; RT: 7,47 min); **5:**

malvidin-3-O-glucoside (m/z 493,1328; RT: 7,57 min); **6**: delphinidin-3-O-acetylglucoside (m/z 507,1119; RT: 7,71 min); **7**: peonidin 3-(6''-acetylglucoside) (m/z 505,1333; RT: 8,19 min); **8**: malvidin-3-O-acetylglucoside (m/z 535,1442; RT: 8,23 min); **9**: petunidin-3-(6-coumaroyl-glucoside) (m/z 625,1556; RT: 8,46 min); **10**: malvidina-3-(6-coumaroyl)-glucoside (m/z 639,1717; RT: 8,79 min). Line colours: grey (rootstock '3309', clone '944'); brown (rootstock 'SO4', clone 'Californiano'); orange (rootstock 'Gravesac', clone 'Californiano'); purple (rootstock 'Gravesac', clone '398'), blue (rootstock 'Gravesac', clone '717'); yellow (rootstock 'Gravesac', clone '794').