

Assessment of damage caused by the spider mite *Mononychellus planki* (McGregor) on soybean cultivars in South America

Jonas Andre Arnemann*, Rubens Alex Fiorin, Jerson Vanderlei Carus Guedes, Henrique Pozebon, Rafael Paz Marques, Clerison Regis Perini, Lindolfo Storck

Supplementary Table 1. Soybean cultivars evaluated in the municipalities of São Sepé and Santa Maria, RS, Brazil, in 2011/2012.

Experiment I			Experiment II		
Soybean cultivar	GF	MG	Soybean cultivar	GF	MG
A 6411 RG ¹	Determinate	6.7	A 6411 RG	Determinate	6.7
A 7321 RG	Indeterminate	7.5	A 7321 RG	Indeterminate	7.5
BMX Ativa RR ²	Determinate	5.6	BMX Ativa RR	Determinate	5.6
BMX Energia RR	Indeterminate	5.3	BMX Energia RR	Indeterminate	5.3
BMX Potência RR	Indeterminate	6.7	BMX Potência RR	Indeterminate	6.7
BMX Turbo RR	Indeterminate	5.8	BMX Turbo RR	Indeterminate	5.8
Don Mario Apolo RR	Indeterminate	5.5	Don Mario Apolo RR	Indeterminate	5.5
FPS Urano RR	Determinate	6.2	FPS Urano RR	Determinate	6.2
FUNDACEP 57 RR	Determinate	6.2	FUNDACEP 57 RR	Determinate	6.2
NA 4990 RG	Indeterminate	4.9	NA 4990 RG	Indeterminate	4.9
NA 5909 RG	Indeterminate	6.2	NA 5909 RG	Indeterminate	6.2
NK 7059 RR	Indeterminate	6.1	NK 7059 RR	Indeterminate	6.1
NS 4823 RR	Indeterminate	5.0	NS 4823 RR	Indeterminate	5.0
NS 5858 RR	Indeterminate	5.8	NS 5858 RR	Indeterminate	5.8
NS 6636 RR	Indeterminate	6.6	NS 6636 RR	Indeterminate	6.6
ROOS Camino RR	Indeterminate	5.3	ROOS Camino RR	Indeterminate	5.3
SYN 1059 RR	Indeterminate	5.9	SYN 1059 RR	Indeterminate	5.9
SYN 1161 RR	Indeterminate	6.3	SYN 1161 RR	Indeterminate	6.3
SYN 1163 RR	Indeterminate	6.3	SYN 1163 RR	Indeterminate	6.3
TMG 7161 RR	Indeterminate	5.9	TMG 7161 RR	Indeterminate	5.9
			FUNDACEP 59 RR	Determinate	7.5
			NS 7100 RR	Indeterminate	7.1
			SYN 1157 RR	Indeterminate	5.8
			SYN 1158 RR	Indeterminate	5.8
			08ca905023*	—	—

Experiment I: municipality of São Sepé, Experiment II: municipality of Santa Maria.

GF: growth form, MG: maturity group, RG: Resistant to Glyphosate®, RR: Roundup Ready®

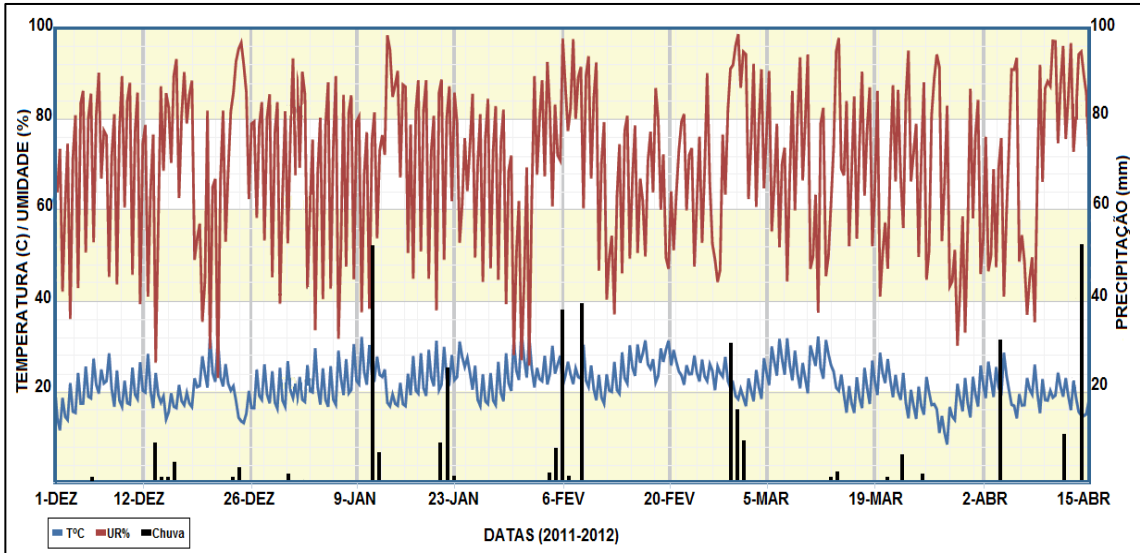
* Not registered in the National Cultivar Registration (Registro Nacional de Cultivares – RNC), or with no available information

Supplementary Table 2. Dates and respective developmental stages of the soybean cultivars at the sampling of leaflets in the municipality of São Sepé, RS, Brazil, during the 2011/2012 season

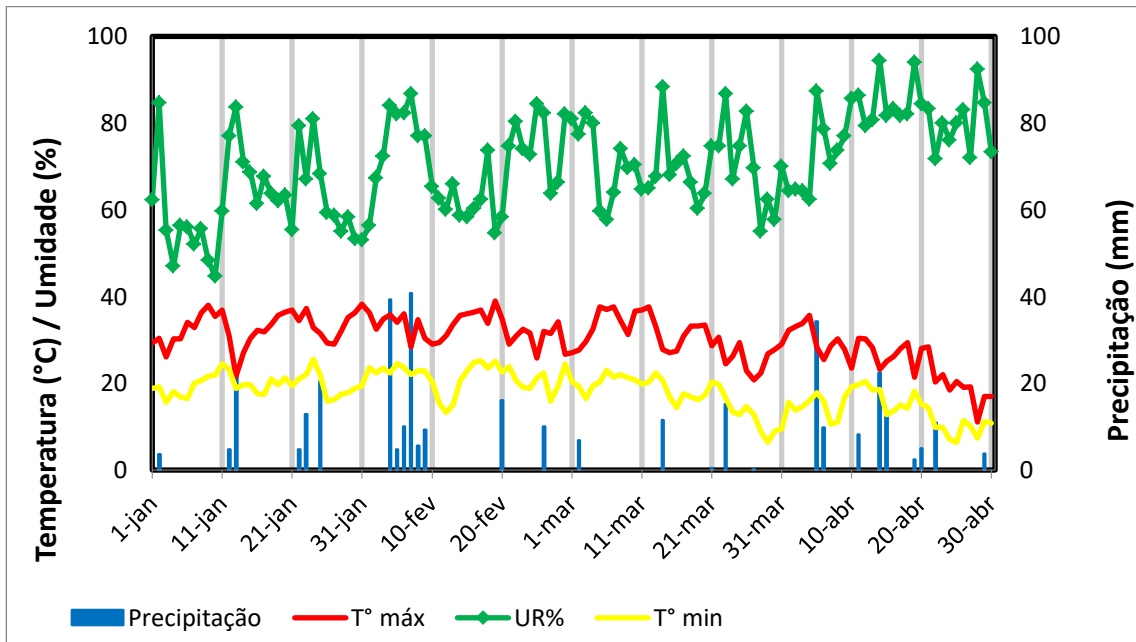
Soybean cultivar	01/19/2012	01/25/2012	02/02/2012	02/08/2012	02/15/2012	02/22/2012	02/29/2012	03/07/2012	03/14/2012	03/23/2012	04/02/2012
A 6411 RG	V7	V9	V9	R1	R2	R2	R4	R5.1	R5.2	R5.4	R7
A 7321 RG	V6	V7	R1	R2	R2	R3	R4	R5.1	R5.3	R5.5	R7
BMX Ativa RR	V6	V6	R1	R2	R3	R4	R5.1	R5.3	R6	R7	R8
BMX Energia RR	V6	V7	R2	R3	R4	R5.1	R5.1	R5.4	R5.4	R7	R9
BMX Potência RR	V6	V7	V9	R1	R2	R3	R4	R5.1	R5.2	R5.4	R8
BMX Turbo RR	V5	V6	R2	R2	R3	R4	R5.1	R5.2	R5.3	R6	R8
Don Mario Apolo RR	V7	V8	R2	R2	R4	R5.1	R5.2	R5.3	R5.4	R6	R8
FPS Urano RR	V6	V7	R1	R2	R2	R3	R4	R5.1	R5.3	R6	R8
Fundacep 57 RR	V6	V7	V9	V10	R1	R2	R3	R4	R5.2	R5.3	R7
NA 4990 RG	V6	R1	R2	R2	R4	R5.2	R5.3	R5.4	R6	R7	R8
NA 5909 RG	V5	V7	R1	R2	R2	R3	R5.1	R5.3	R5.4	R6	R8
NK 7059 RR	V6	V8	V10	R1	R2	R3	R5.1	R5.2	R5.3	R6	R8
NS 4823 RR	V6	R1	R2	R2	R4	R5.1	R5.3	R5.4	R5.5	R7	R8
NS 5858 RR	V7	R1	R2	R3	R4	R5.1	R5.2	R5.3	R5.4	R6	R6
NS 6636 RR	V7	V8	R1	R2	R3	R4	R5.1	R5.2	R5.3	R5.5	R7
ROOS Camino RR	V6	V7	R1	R2	R3	R4	R5.1	R5.2	R5.4	R7	R8
SYN 1059 RR	V5	V7	R1	R2	R4	R4	R5.1	R5.2	R5.3	R6	R8
SYN 1161 RR	V5	V6	R1	R2	R2	R3	R4	R5.1	R5.2	R5.3	R8
SYN 1163 RR	V7	V8	R1	R2	R2	R4	R5.1	R5.2	R5.2	R5.5	R8
TMG 7161 RR	V7	V8	R2	R2	R4	R5.1	R5.2	R5.3	R5.5	R7	R7

Supplementary Table 3. Dates and respective developmental stages of the soybean cultivars at the sampling of leaflets in the municipality of Santa Maria, RS, Brazil, during the 2011/2012 season.

Soybean cultivar	02/17/2012	02/24/2012	03/02/2012	03/09/2012	03/16/2012	03/24/2012	04/03/2012	04/11/2012	04/20/2012	04/27/2012
A 6411 RG	V5	V8	R1	R2	R2	R5.2	R5.2	R5.5	R6	—
A 7321 RG	V6	V8	R1	R2	R3	R5.2	R5.2	R5.5	R6	—
BMX Ativa RR	V7	R1	R1	R2	R5.1	R5.1	R5.4	R6	R7	—
BMX Energia RR	V4	R1	R1	R3	R3	R5.4	R5.4	R6	R8	—
BMX Potência RR	V6	V8	R2	R2	R3	R5.2	R5.3	R6	R8	—
BMX Turbo RR	V6	V8	R2	R3	R3	R5.2	R5.4	R7	R8	—
Don Mario Apolo RR	V5	V7	R1	R2	R3	R5.2	R5.4	R7	R8	—
FPS Urano RR	V7	V7	R1	R3	R5.1	R5.2	R5.5	R6	R7	—
Fundacep 57 RR	V6	V8	V9	R1	R2	R5.1	R5.1	R5.3	R6	R7
NA 4990 RG	R1	R2	R2	R3	R3	R5.3	R5.4	R7	R8	—
NA 5909 RG	V6	V8	R2	R2	R3	R5.3	R5.3	R6	R7	—
NK 7059 RR	V6	V7	R1	R2	R3	R4	R5.4	R7	R8	—
NS 4823 RR	V8	R1	R2	R4	R4	R5.3	R5.5	R8	—	—
NS 5858 RR	R1	R2	R3	R3	R4	R5.3	R5.5	R7	R8	—
NS 6636 RR	V6	V9	R2	R2	R4	R5.1	R5.3	R6	R8	—
ROOS Camino RR	V6	R1	R2	R2	R4	R5.2	R5.4	R7	R8	—
SYN 1059 RR	V7	V8	R2	R2	R3	R5.3	R5.4	R6	R7	—
SYN 1161 RR	V6	V8	R1	R1	R3	R5.2	R5.3	R6	R8	—
SYN 1163 RR	V6	V9	R2	R2	R3	R5.3	R5.4	R6	R8	—
TMG 7161 RR	V6	V7	R2	R2	R4	R5.2	R5.4	R7	R8	—
Fundacep 59 RR	V6	V8	V9	V10	R2	R4	R5.1	R5.3	R6	R7
NS 7100 RR	V6	V8	R1	R2	R3	R5.3	R5.4	R7	R8	—
SYN 1157 RR	V5	V8	R1	R2	R3	R5.1	R5.4	R7	R8	—
SYN 1158 RR	V6	V8	R1	R2	R3	R5.1	R5.3	R7	R8	—
08ca905023	V6	V8	R1	R2	R3	R5.2	R5.2	R5.5	R6	—



Supplementary Fig 1. Daily floating of temperature (Celsius), relative air humidity (UR%) and rainfall (mm) from 01.12.2011 to 15.04.2012 in Caçapava, RS. Data obtained from the Meteorological Station of Caçapava, RS.



Supplementary Fig 2. Daily floating of temperature (Celsius), relative air humidity (UR%) and rainfall (mm) from 01.01.2012 to 30.04.2012 in Santa Maria, RS. Data obtained from the Meteorological Station of UFSM, Santa Maria, RS.