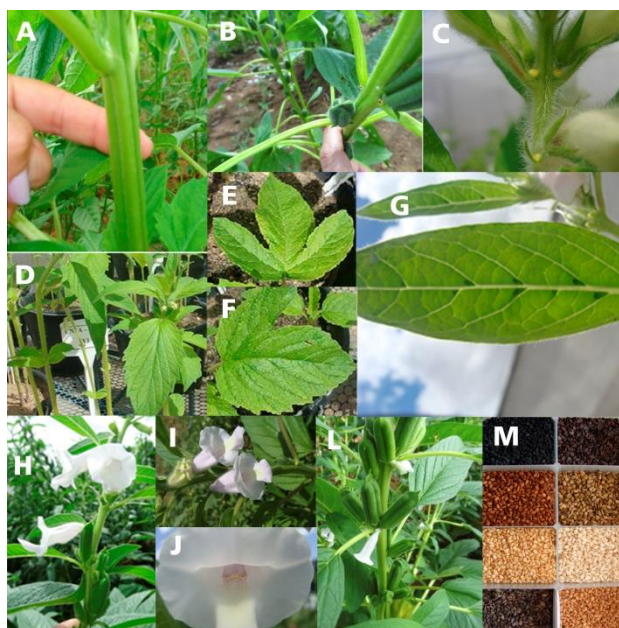
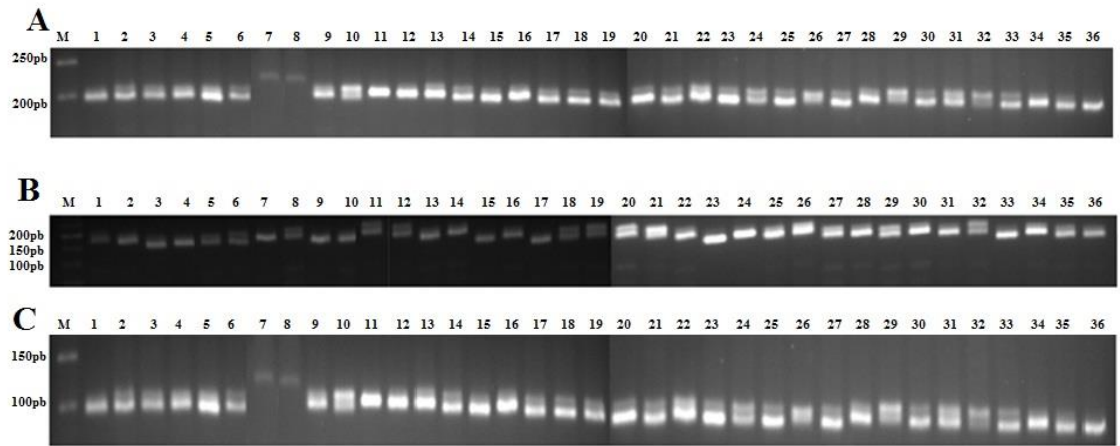


Assessment of genetic variability in sesame accessions using SSR markers and morphoagronomic traits

Eveline de Sousa Araújo, Nair Helena Castro Arriel, Roseane Cavalcanti dos Santos, Liziane Maria de Lima*



Supplementary Figure 1. Representative image showing morphological characteristics presented in some genotypes of sesame A. Stem shape; B. Capsule; C. Extra-floral nectary development; D. E. F. G. Leaf shape, basal leaf margin; H. I. J. L. Flower; M. Seed coat color.



Supplementary Figure 2. Standard bands obtained with primers ZM-22 (A), ZM-34 (B) and ZM-45 (C). M - 1 Kb marker (Ludwig Biotec); 1 to 36 - sesame accessions of the Embrapa Algodão ABG, described in Table 1.