

Supplementary data

Comparative proteomic analysis of rice stripe virus (RSV)-resistant and -susceptible rice cultivars

Yanhua Yang, Li Dai, Hengchuan Xia, Keming Zhu, Xiaoyong Liu and Keping Chen

The following online material is available for this article:

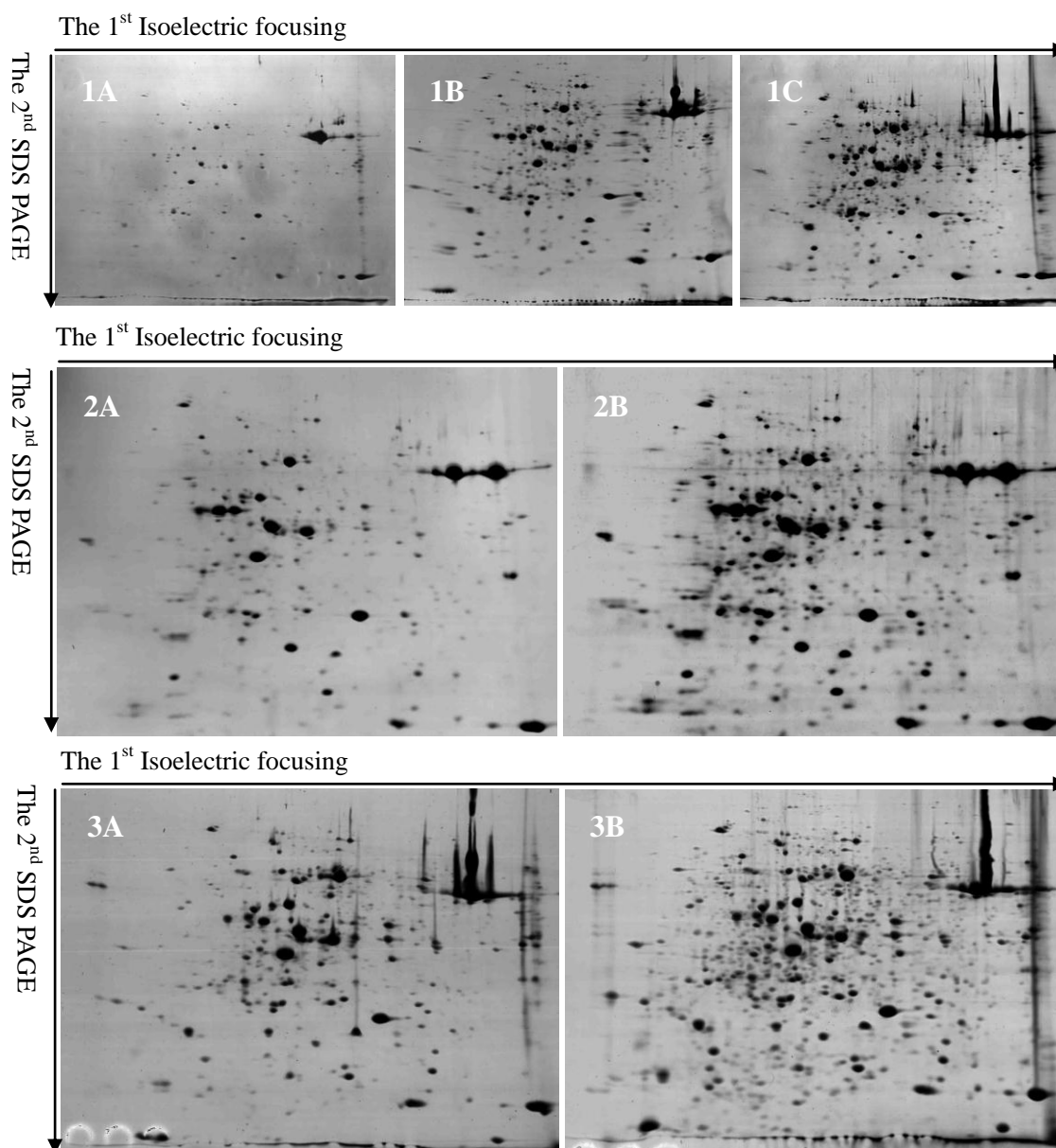


Fig S1. The results of experimental methods. Note: 1: Comparison of 2-DE profiles of different loading quantities.

1A: 260 µg; 1B: 400 µg; 1C: 500 µg. 2: Comparison of 2-DE profiles of different bleaching methods.

2A: normal bleaching; 2B: soaked 12 h using 5% glacial acetic acid after normal bleaching.

3: Comparison of 2-DE profiles of different staining reagents.

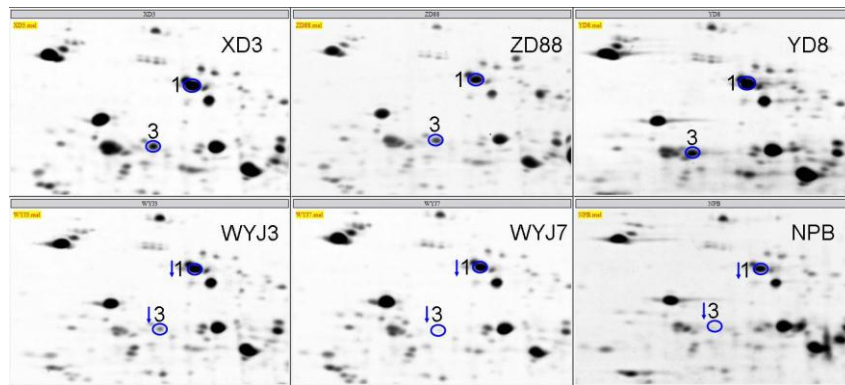


Fig S2. Enlarged view of differentially expressed proteins (spot 1 and 3) in RSV-resistant and -susceptible rice cultivars. RSV-highly resistant rice cultivars: XD3, Xudao 3; ZD88, Zhendao 88; YD8, Yandao 8; RSV-highly susceptible rice cultivars: WYJ3, Wuyujing 3; WYJ7, Wuyunjing 7; NPB, Nipponbare

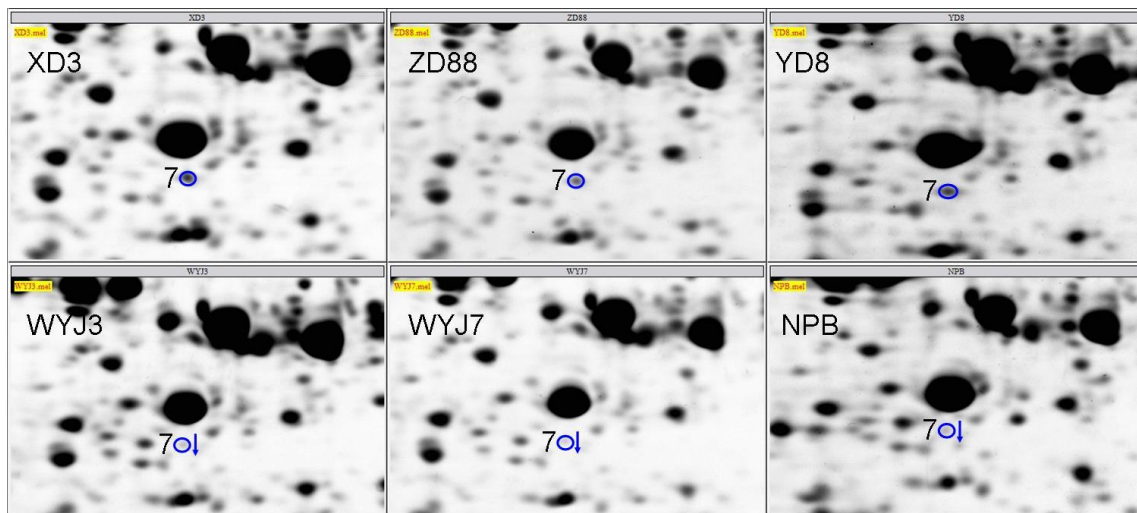


Fig S3. Enlarged view of differentially expressed proteins in (spot 7) RSV-resistant and -susceptible rice cultivars.

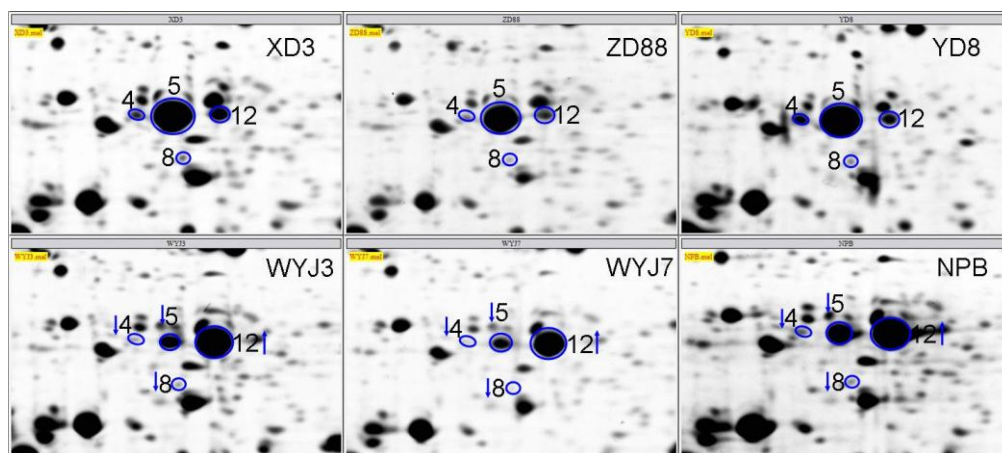


Fig S4. Enlarged view of differentially expressed proteins (spot 4, 5, 8, and 12) in RSV-resistant and -susceptible rice cultivars.