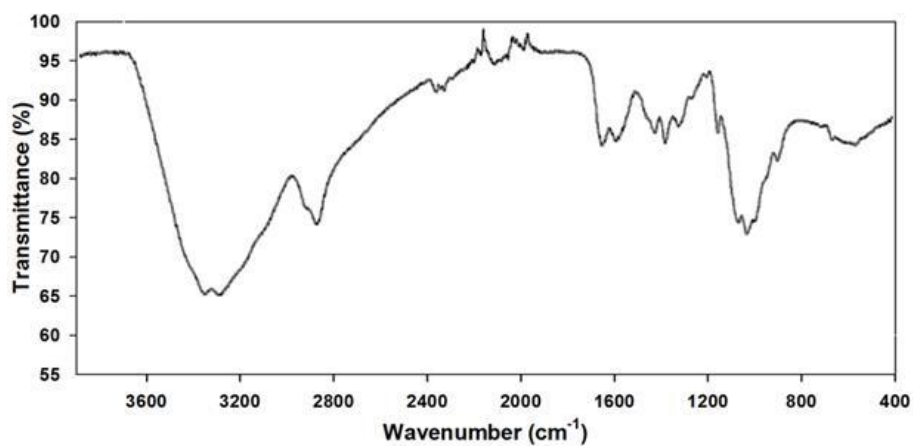
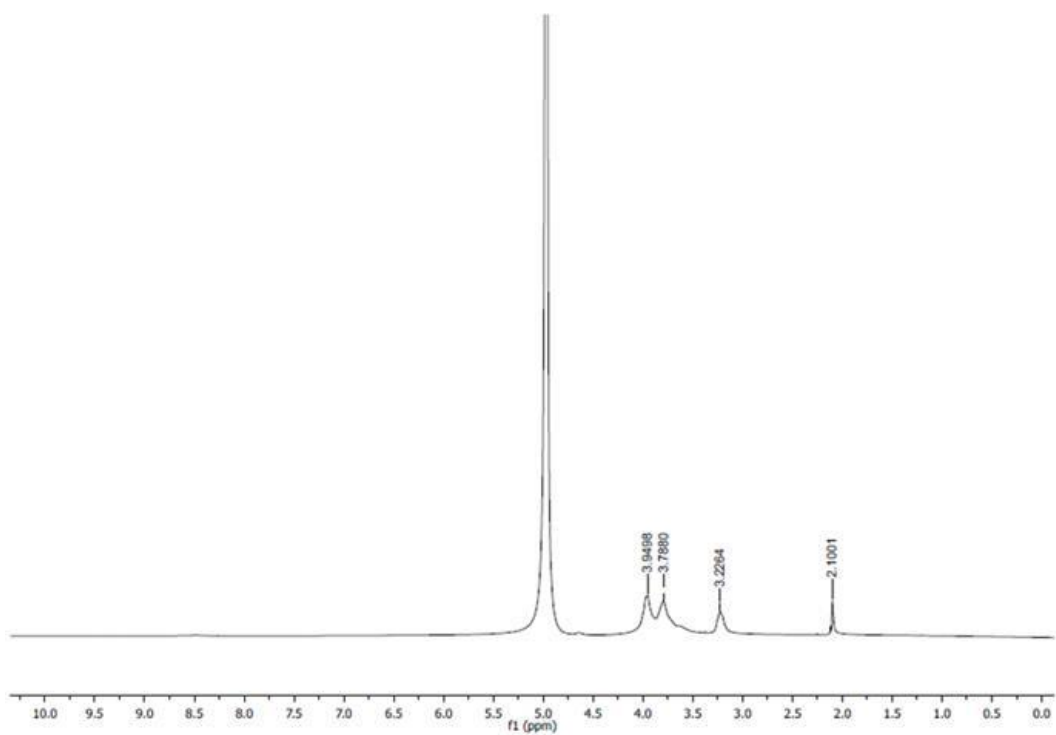


Physicochemical characterization of chitosan and its effects on early growth, cell cycle and root anatomy of transgenic and non-transgenic maize hybrids

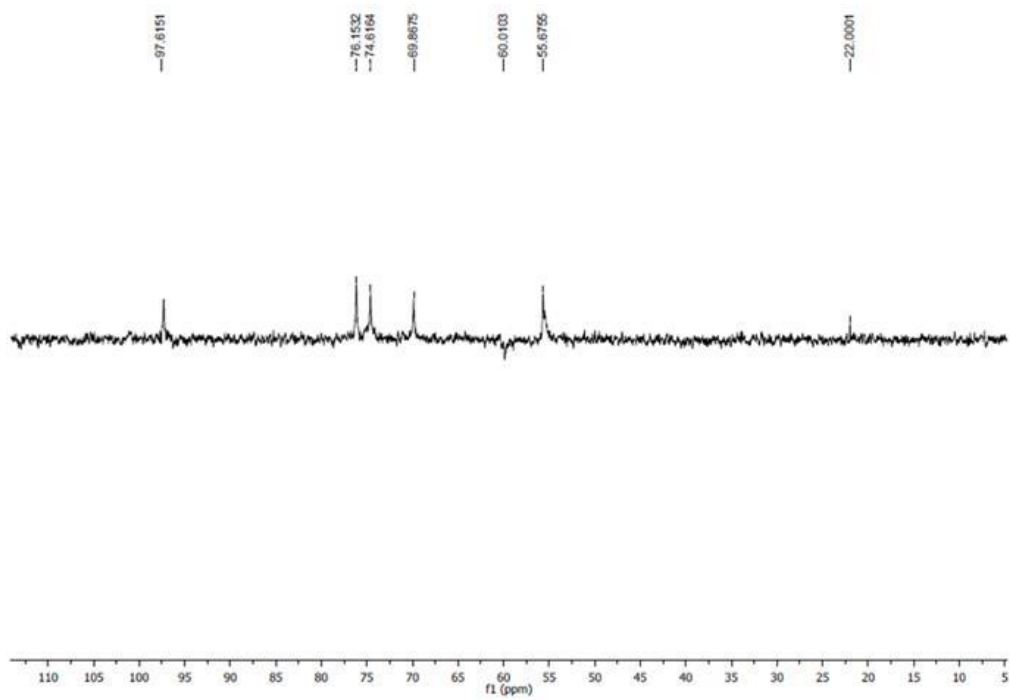
Mayron Martins, Valdir Veroneze-Júnior, Marília Carvalho, Diogo T. Carvalho, Sandro Barbosa, Antônio C. Doriguetto, Paulo C. Magalhães, Cleberson Ribeiro, Marcelo H. dos Santos and Thiago C. de Souza



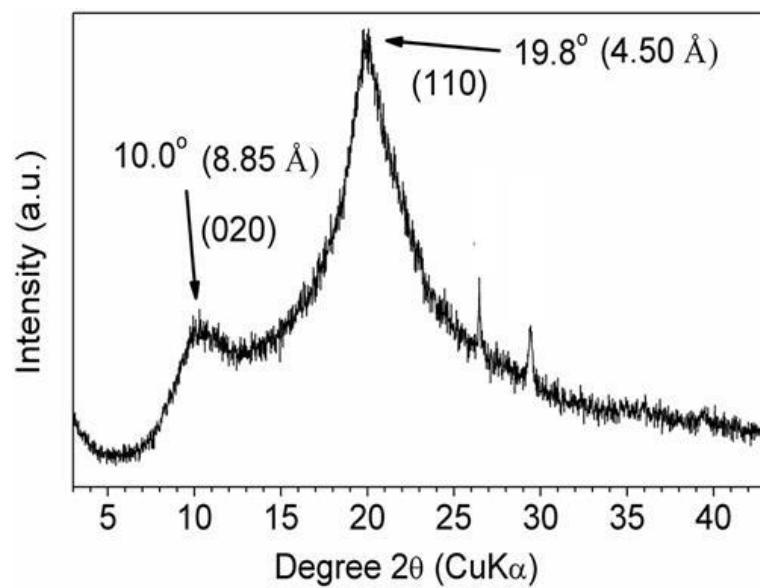
Supplementary Fig 1. Spectra of infrared absorption of chitosan.



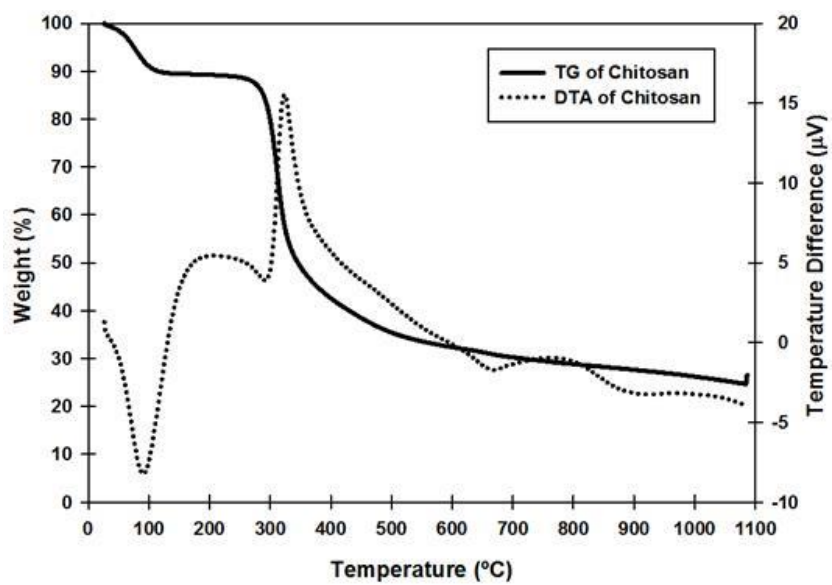
Supplementary Fig 2. ¹H-NMR spectrum of chitosan A.



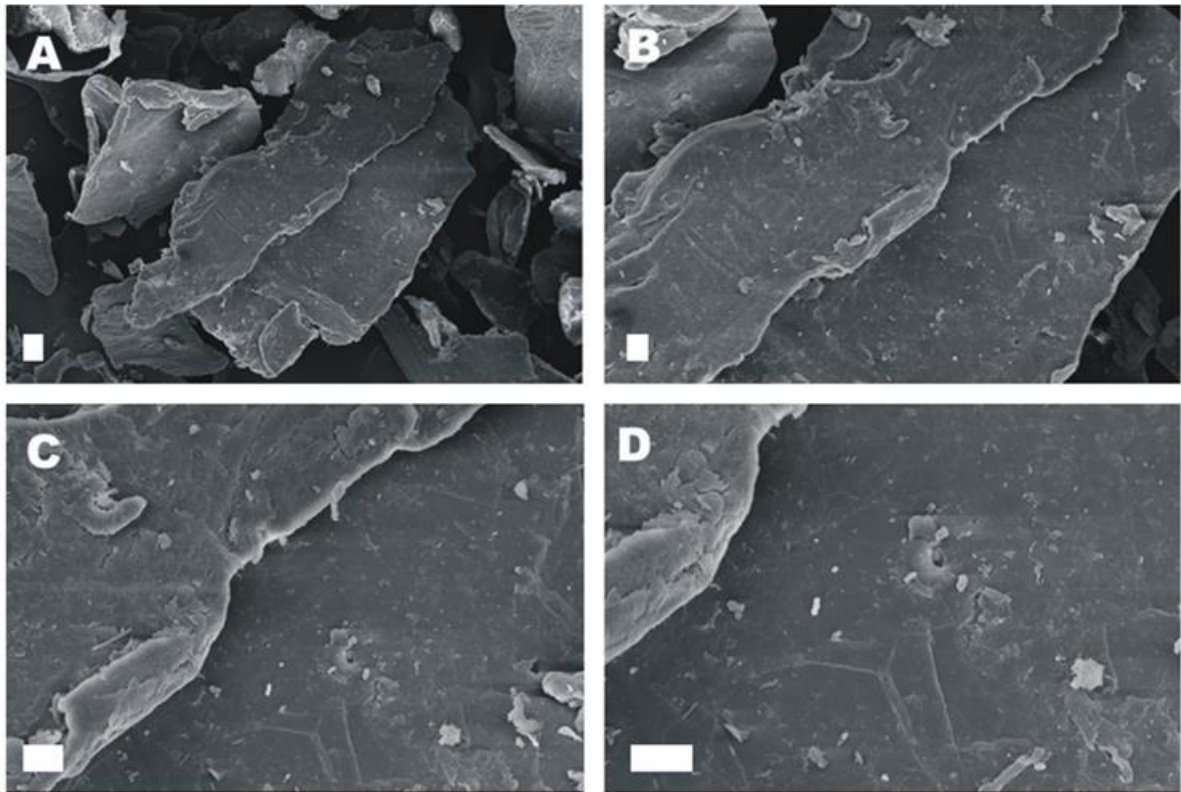
Supplementary Fig 3. ^{13}C -NMR subspectrum of chitosan.



Supplementary Fig 4. PXRD pattern of chitosan.



Supplementary Fig 5. Curves TGA and DTA of chitosan.



Supplementary Fig 6. Electron micrographs of scanning electron microscopy (SEM) of chitosan. (A) Magnification bar = 500 times and 20 μm ; (B) Magnification 1,000 times and bar = 10 μm ; (C) Magnification 2000 times and bar = 10 μm ; (D) Magnification of 3000 times and bar = 10 μm .