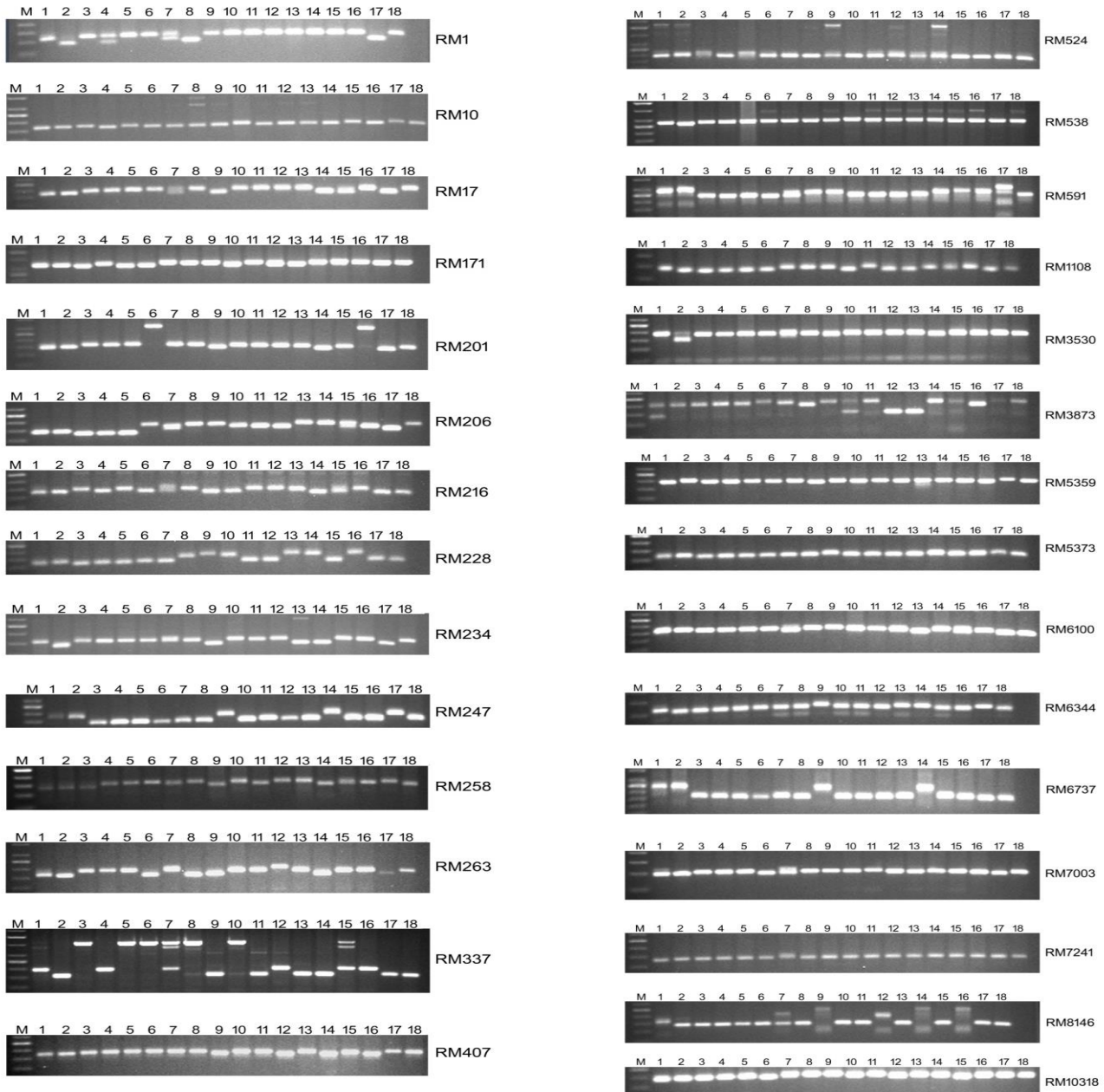


Supplementary data

Characterization of maintainer and restorer lines for wild abortive cytoplasmic male sterility in indica rice (*Oryza sativa* L.) using pollen fertility and microsatellite (SSR) markers

Pankaj Kumar<sup>1\*</sup>, Vinay Kumar Sharma, Bishun Deo Prasad



Supplemental Fig 1. Molecular profiles of 18 rice entries obtained using different SSR markers. M: DNA Marker, 1-18: rice entries. Name of different SSR written in the right side of each gel.