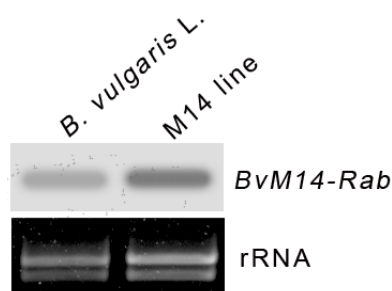
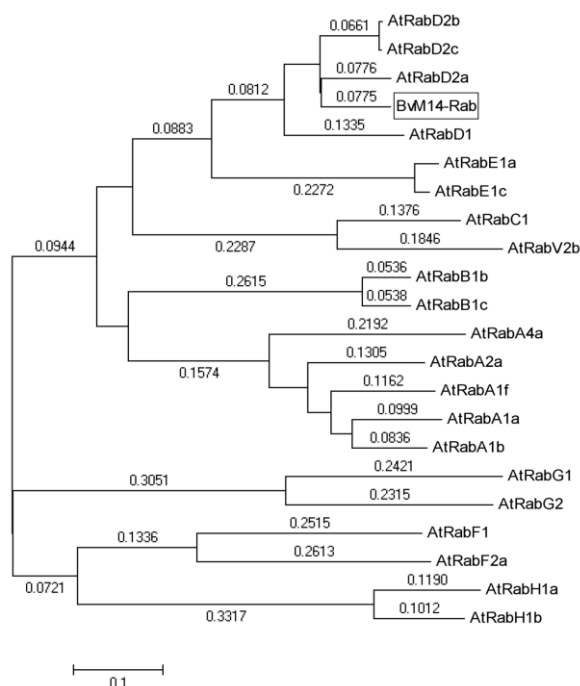


Molecular cloning and characterization of a rat sarcoma-like protein from brain (*Rab*) gene in sugar beet monosomic additional line M14

Haiying Li*, Lin Ji, Chunquan Ma, Bing Wang, Yu Liu, Bing Yu, Sixue Chen



Supplemental Fig. 1. Northern blot showing higher expression levels of *BvM14-Rab* in the M14 line than in the cultivated species *B. vulgaris* L. Total ribosomal RNA (rRNA) from each of the samples was used as a loading control.



Supplemental Fig. 2. Phylogenetic tree of *BvM14-Rab* and representative Rabs from the eight subfamilies (RabA-RabH) in *Arabidopsis*. The name of the protein (*BvM14-Rab*) characterized in this study is boxed. The numbers indicate branching distances. The accession numbers of the Rab protein sequences used are: *AtRabA1a* (gi|114086|), *AtRabA1b* (gi|3024526|), *AtRabA1f* (gi|10176913|), *AtRabA2a* (gi|3024516|), *AtRabA4a* (gi|10178189|), *AtRabB1b* (gi|21436445|), *AtRabB1c* (gi|1765896|), *AtRabC1* (gi|2231312|), *AtRabC2b* (gi|6681328|), *AtRabD1* (gi|4097557|), *AtRabD2a* (gi|15217622|), *AtRabD2b* (gi|75172011|), *AtRabD2c* (gi|75204021|), *AtRabE1a* (gi|28466873|), *AtRabE1c* (gi|114088|), *AtRabF1* (gi|28393957|), *AtRabF2a* (gi|400976|), *AtRabG1* (gi|9758338|), *AtRabG2* (gi|4417298|), *AtRabH1a* (gi|8843763|), and *AtRabH1b* (gi|107738267|).