

Supplementary data

Isolation and characterization of rhizobacteria and their effects on root extracts of *Valeriana officinalis*

Behnoushsadat Ghodsalavi*, Masoud Ahmadzadeh, Mohsen Soleimani, Pari Brokanloui Madloo, Rahim Taghizad-Farid



Figure1- Isolation of bacterial isolates from valerian rhizosphere

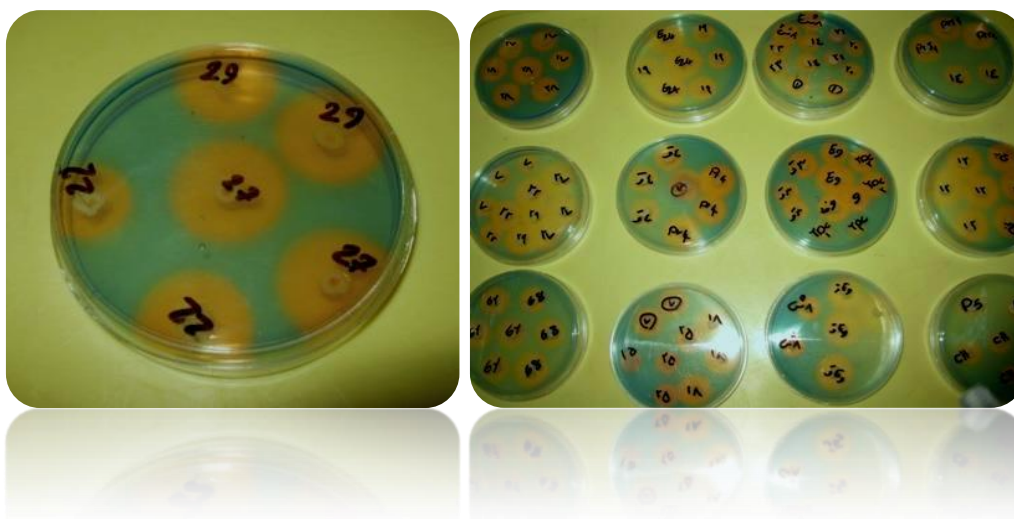


Figure 2- Change of color from blue to orange on CAS medium indicated production of siderophore

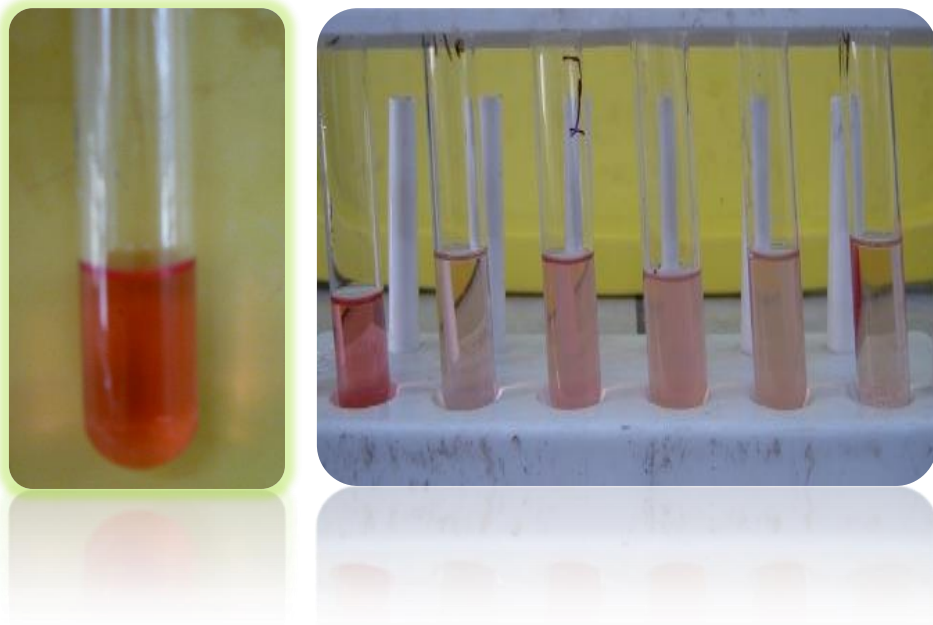


Figure 3- Production of auxin by isolates.

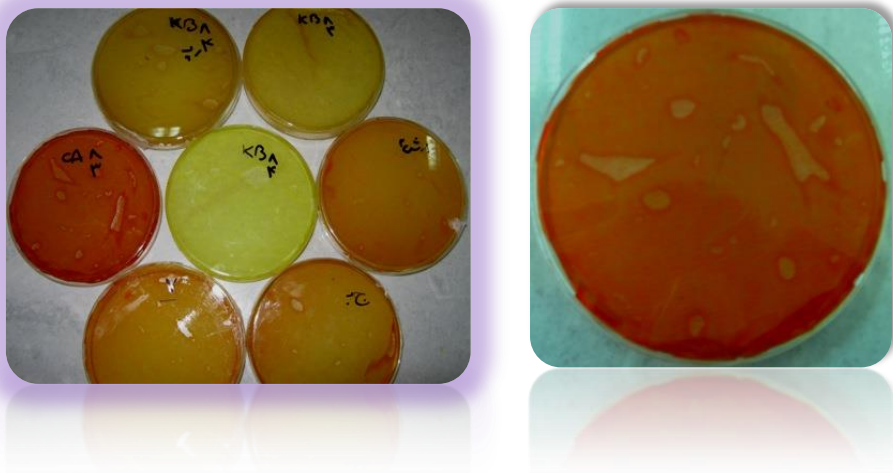


Figure 4 - HCN production was determined by color change of yellow filter papers to cream, light brown, dark brown and reddish-brown

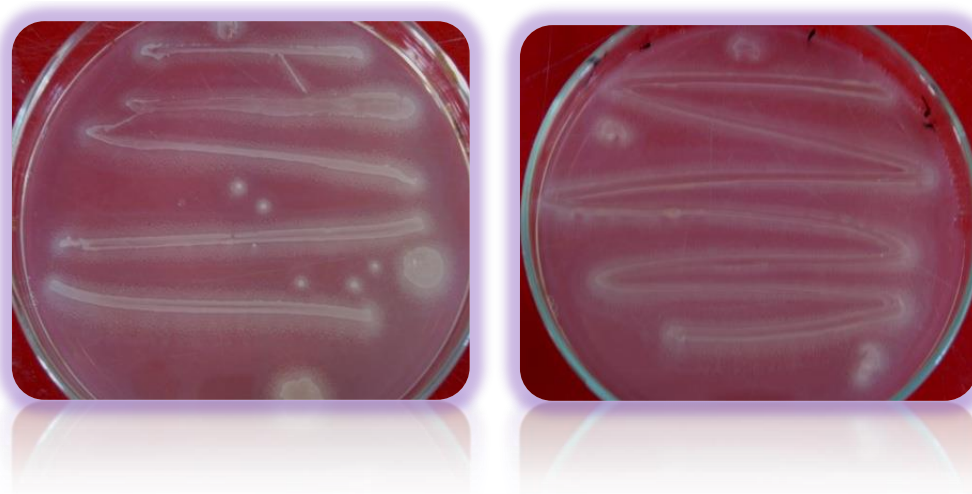


Figure 5- Depositions around the bacterial colonies indicated activity of lipase enzyme.

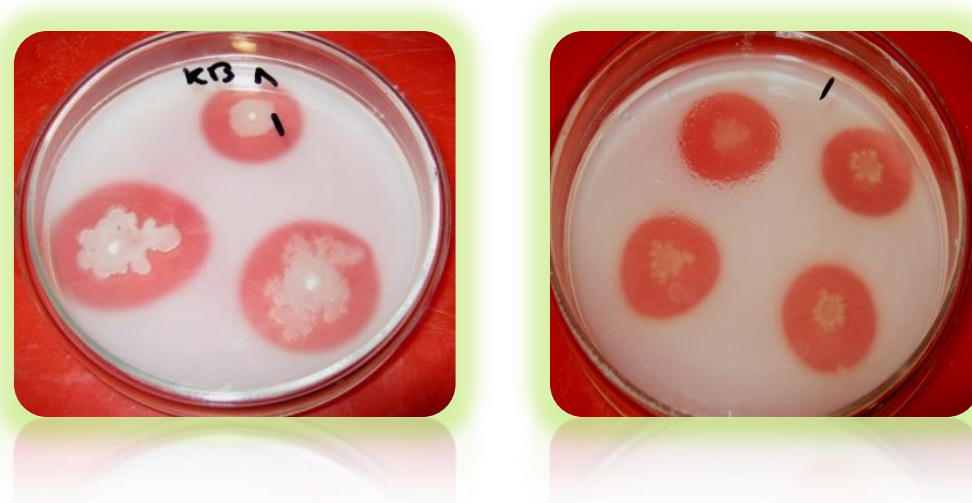


Figure 6- Colorless halo zone around the bacterial colonies indicated activity of protease enzyme